



**katzkin**<sup>®</sup>

AUTOMOTIVE LEATHER

*Love Your Drive*<sup>®</sup>

**SWATCH eBOOK**

**2023**

# katzkin®

AUTOMOTIVE LEATHER

Katzkin is the undisputed leader in custom automotive interiors. We offer the freedom of choice and the resources of a professional design studio. See some of the designs our experts created for your vehicle by exploring our **online design selector** at **katzkin.com**. Or you can start designing your own interior with this handy Swatch eBook.

Keep in mind, this book is only a tool to get you started. Because the monitor you're viewing this on (or the printer you printed it on) may have different settings than all others out there, the colors may not appear accurately. DO NOT USE for color matching. When it's time to actually select your design, you must refer to the physical samples which are available on the Katzkin Swatch Deck.

Leather is a natural product, therefore colors may vary from one dye lot to another. Katzkin reserves the right to change or discontinue colors at any time without notification. This selection deemed accurate at time of publication, Jan. 2023.

©2023 Katzkin Leather, Inc. The Katzkin logo and Love Your Drive are both registered trademarks of Katzkin Leather, Inc.

## TWO-TONE OPTIONS

Combining two leather colors is available for all interior patterns. Adding a third color option may be possible on select patterns where Wings are part of the interior design. Please refer to the online design selector tool to see what's available for your vehicle.



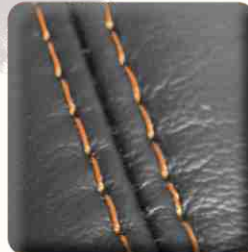
### WINGS

Any set of panels that deviates from the configurations shown above. Wings may be, but are not limited to, the examples shown here. Wings are not available on all vehicle interiors, only select patterns.

## OTHER DESIGN OPTIONS

Sometimes piping, perforation or contrast stitching adds just the right touch to your interior design. For something bolder, ask about TekStitch\*.

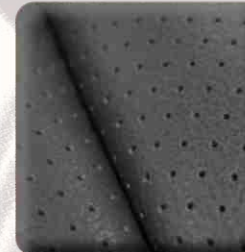
\*Available only on select interior patterns.



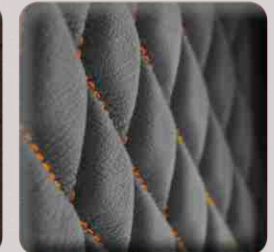
CONTRAST STITCHING



PIPING



PERFORATION



TekStitch\*



**katzkin**<sup>®</sup> *AUTOMOTIVE LEATHER*

**Katzkin Premium Leather** is engineered to meet and, in most cases, exceed the specifications of OEM quality leather. Each hide is hand inspected to ensure no defects ever make it into a finished interior. And with 65 unique colors to choose from, your options are virtually limitless.



BLACK



DARK GRAPHITE



GRAPHITE



CHARCOAL



LT. GREY



LAPIS



LUNAR GREY



MIST GREY



PLATINUM



STONE



SMOKE



ICE GREY



GREY



ASH



PUMICE



FROST



FOSSIL



CEMENT



DOVE GREY

SLATE

PUDDY

SHALE

DUNE

CANVAS

BISCUIT

VANILLA

PARCHMENT

CREAM

BISQUE

BAMBOO

SANDSTONE

ADOBE

IVORY

BEACH

DESERT

FAWN

# **katzkin**<sup>®</sup> *AUTOMOTIVE LEATHER*

**Katzkin Premium Leather** is engineered to meet and, in most cases, exceed the specifications of OEM quality leather. Each hide is hand inspected to ensure no defects ever make it into a finished interior. And with 65 unique colors to choose from, your options are virtually limitless.

# **katzkin**<sup>®</sup> AUTOMOTIVE LEATHER

**Katzkin Premium Leather** is engineered to meet and, in most cases, exceed the specifications of OEM quality leather. Each hide is hand inspected to ensure no defects ever make it into a finished interior. And with 65 unique colors to choose from, your options are virtually limitless.



DRIFTWOOD



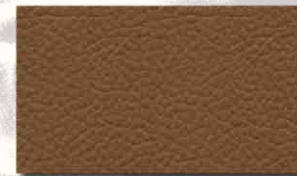
BRISTOL



BEIGE



NUTMEG



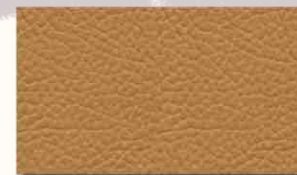
WALNUT



TEAK



TAN



DOESKIN



AUTUMN



CAMEL



DARK BROWN



JAVA



COFFEE



MAHOGANY



COGNAC



MEDIUM RED



CARDINAL



RED



**katzkin**<sup>®</sup> *AUTOMOTIVE LEATHER*

**Katzkin Premium Leather** is engineered to meet and, in most cases, exceed the specifications of OEM quality leather. Each hide is hand inspected to ensure no defects ever make it into a finished interior. And with 65 unique colors to choose from, your options are virtually limitless.



SALSA



TANGERINE



ORANGE



PURPLE



BLUE



PACIFIC



ATLANTIC



COBALT



**NEW** OLIVE



**NEW** MAIZE



HYPER YELLOW



SUNRISE



ALABASTER



BONE



PEARL



**AMARETTO**  
(matches Mahogany)



**BOURBON**  
(matches Cognac)



**HAVANA**  
(matches Coffee)



**INK**  
(matches Black)



**MIDNIGHT**  
(matches Dark Graphite)



**STORM**  
(matches Charcoal)



**FLANNEL**  
(matches Lt. Grey)



**GRANITE**  
(matches Smoke)



**STERLING**  
(matches Stone)



**PEWTER**  
(matches Ash)



**OATMEAL**  
(matches Ivory)



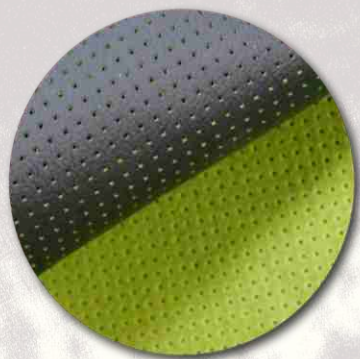
**PALOMINO**  
(matches Tan)



**MARASCHINO**  
(matches Red)



**Tuscany** turns luxury into decadence. This is our softest leather ever, and despite its rich, supple finish, Tuscany still meets the highest standards of automotive durability. We offer matches for our most popular standard colors.

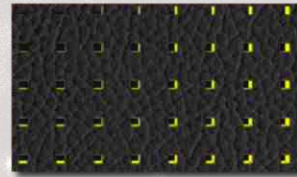


# Barracuda



SQUARE PERFORATED DUO-TONE LEATHER

When you just want a hint of color, maybe to tie the exterior color of your vehicle to the interior, let a little peek through the square perforation of **Barracuda** from the specially-dyed underside of our Premium leather.



BARRACUDA YELLOW



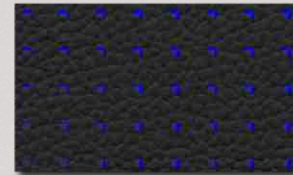
BARRACUDA GREEN



BARRACUDA RED



BARRACUDA ORANGE



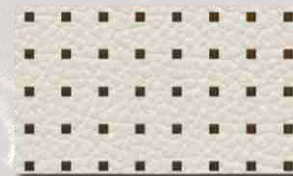
BARRACUDA BLUE



BARRACUDA CHARCOAL



BARRACUDA FLINT



B. ALABASTER/JAVA



B. JAVA NATURAL



BARRACUDA RASPBERRY

katzkin



# SPECIALTY LEATHERS

**katzkin**<sup>®</sup>  
OUR TOUGHEST EVER **XT**

**Katzkin XT** is our toughest ever. Twice as durable, and thicker than our Premium leather and vinyl, it's water resistant, mildew resistant, even kid resistant. Wherever you take it, XT can take it.



XT BLACK



XT STONE



XT RED



**NEW** XT COGNAC



**NEW** XT ATLANTIC

**OUTLAW**<sup>™</sup>  
TOOLED LEATHER by **katzkin**

Put the Old West in your New Ride with **Outlaw**. The look of intricately tooled leather adds that vintage touch of the frontier you often find on holsters, belts and now your 21st century saddle.



OUTLAW BLACK  
(matches Black)



OUTLAW IRON  
(matches Stone)



OUTLAW BROWN  
(matches Coffee)



OUTLAW SADDLE  
(matches Cognac)



OUTLAW CLAY  
(matches Bristol)



RAVEN



DARK SLATE



FOG



HEATHER



SAPPHIRE



SANDALWOOD



MANGO



CHOCOLATE



SCARLET



PINK

# Suede<sup>z</sup>kin<sup>®</sup>

OEM tested and approved **Suede<sup>z</sup>kin** is available as an accent material on any Katzkin pattern. It keeps you snug in your seat, staying warm in the winter and cool in the summer and is the perfect finishing touch to your custom Katzkin interior.



AUSSIE BLACK



EVERGLADES



BAYOU



CARBON SHADOW



CARBON BULLET



CARBON NICKEL



CARBON CRIMSON



MACHINED SILVER



CHROME



ELECTRIC LIME



SCREAMING GREEN



BAHAMA



BERMUDA



**NEW** BLOSSOM



**NEW** BLUSH

# auto *Exotics*™

Use a little or a lot to feed your wild side. When suede and leather don't move you, move on up to AutoExotics. This collection of synthetic materials along with embossed cowhide, takes you off the road most traveled.